



Europe, the Ocean & Feeding the world

Anna Kristín Daniélsdóttir

Matís, Iceland

Panel Discussion 1 – More food from the ocean

The scientific perspective on feasibility and uncertainty

@MatisIceland
@DanielsdottirK
@MareFrame
@ClimeFish
@EUScienceInnov
@EU_MARE



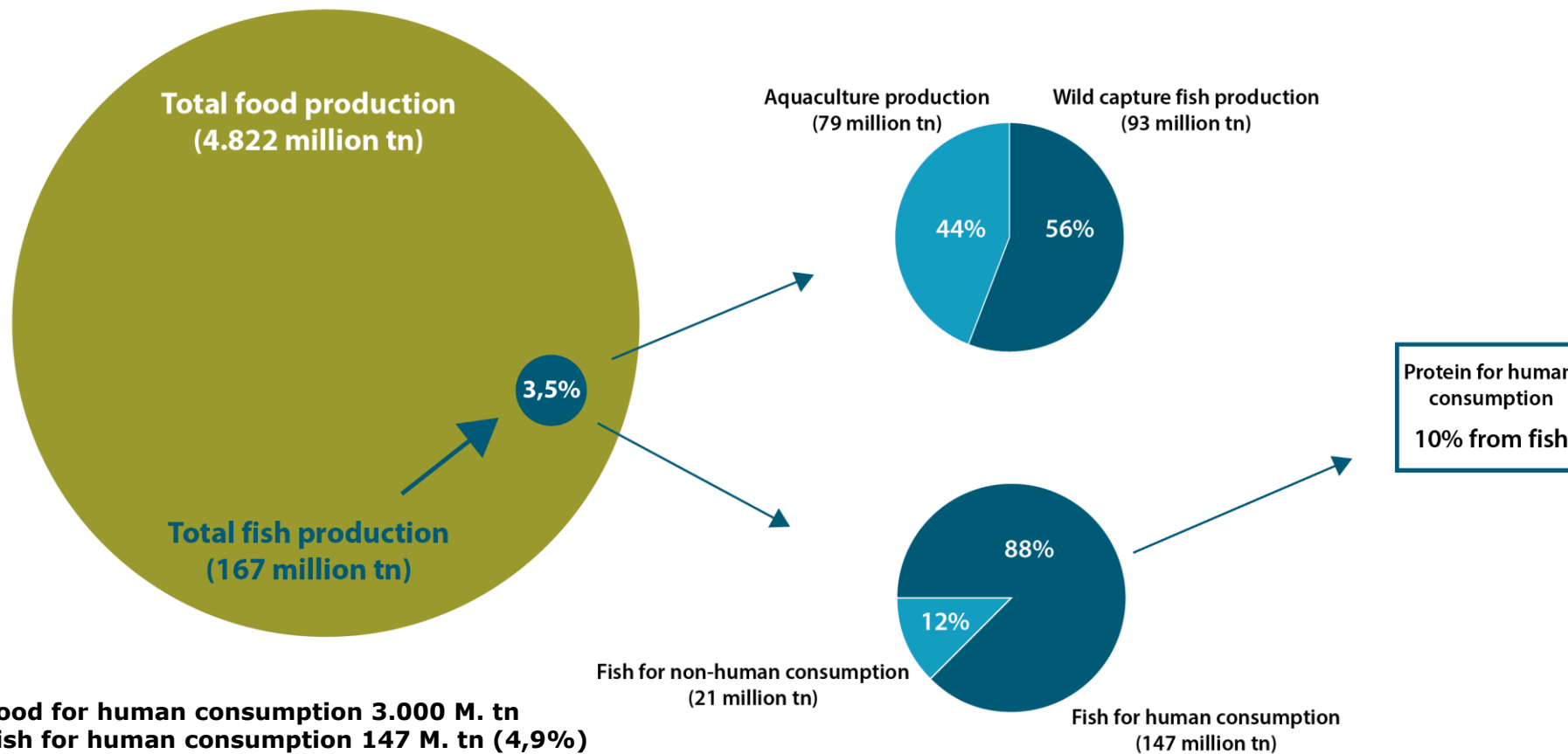
Panel Discussion 1 – More food from the ocean

The scientific perspective on feasibility and uncertainty

- **HOLISTIC, multidisciplinary and participatory APPROACH**
- **SUSTAINABILITY**
- **DATA**
- **Advance models**
- **GOVERNANCE**
- **Communication and Co-creation**
- **POLLUTION**
- **FOOD WASTE**
- **FOOD SAFETY AND INTEGRITY**
- **DATA**
- **IMPLEMENTATION - INCENTIVES**



Facts and figures



Source: FAO food outlook 2016 – figures for 2014

How much is “underutilised”?

Biomass lost as discards at sea 8% on average

- EU finfish discards 20-60%

Utilization in processing of finfish 30-75%

- Common to have 40% utilization for finfish

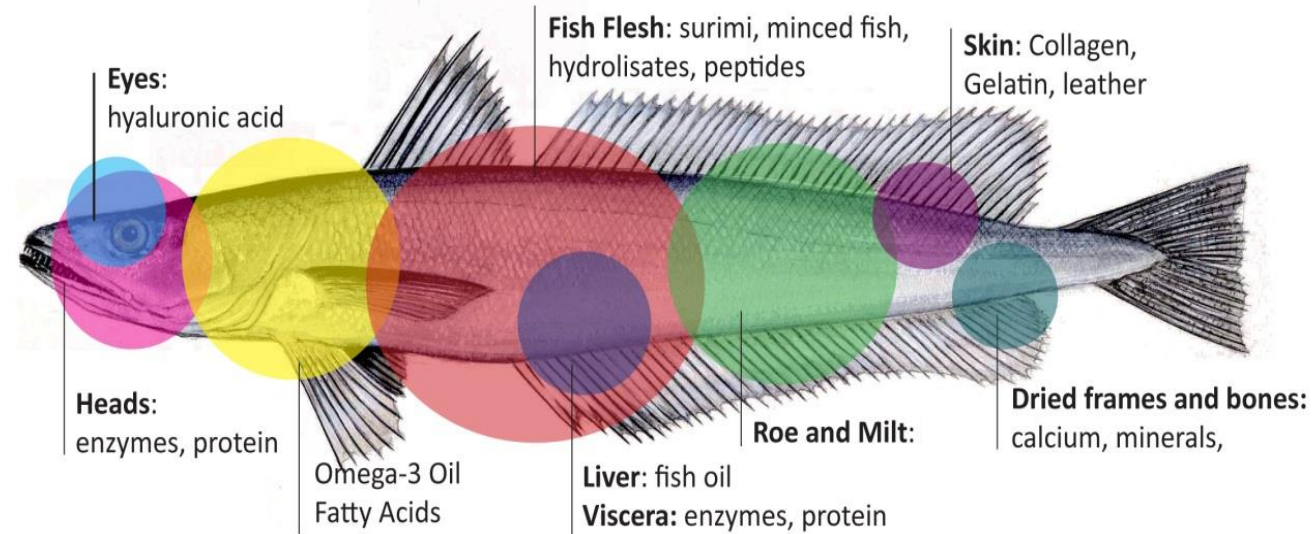
Biomass wasted in retail & distribution 7%

Biomass wasted at consumer level 28%

21%



“Endless” possibilities

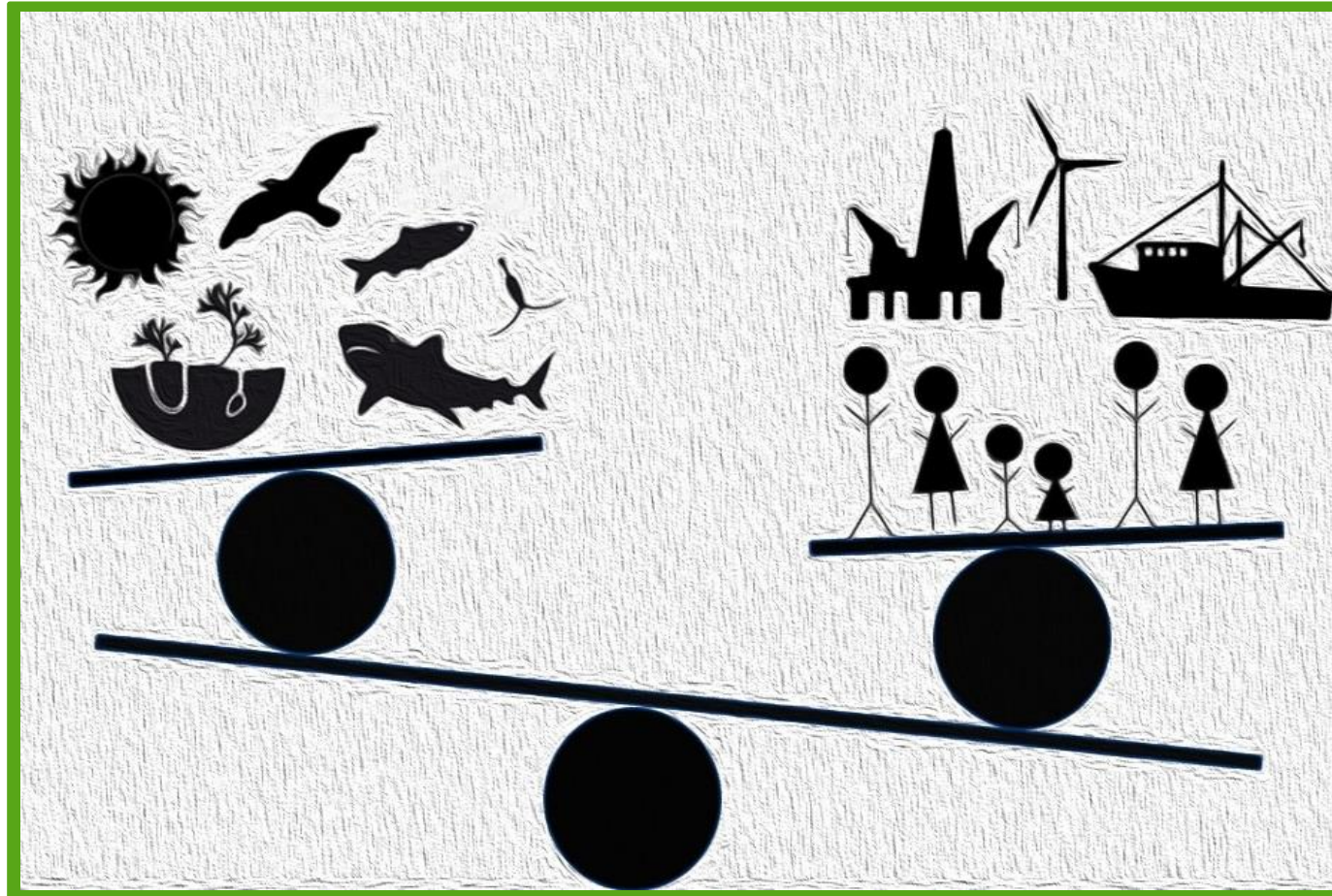


All Ingredients: For foods, dietary supplements, animal nutrition, medicine, cosmetic Ingredients, and what cannot be used previously, can go ultimately to bioenergy (biogas)

Molnes: Example of 100% utilization of finfish All rest raw materials used for FPH



SCIENCE FOR SUSTAINABLE SEAS

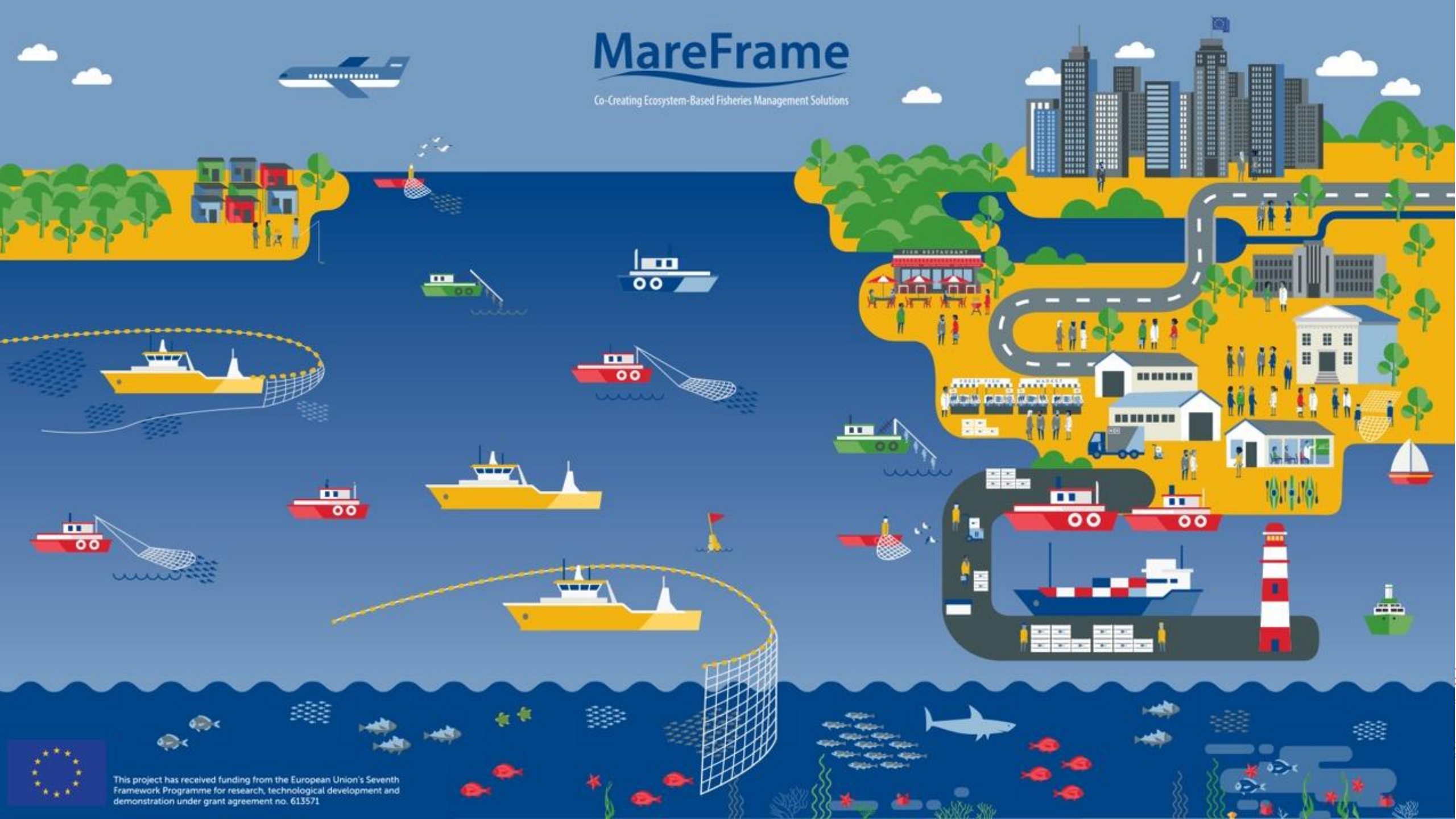


Reference:
ICES/AORA + FAO workshop
on making the ecosystem approach
operational 2016



MareFrame

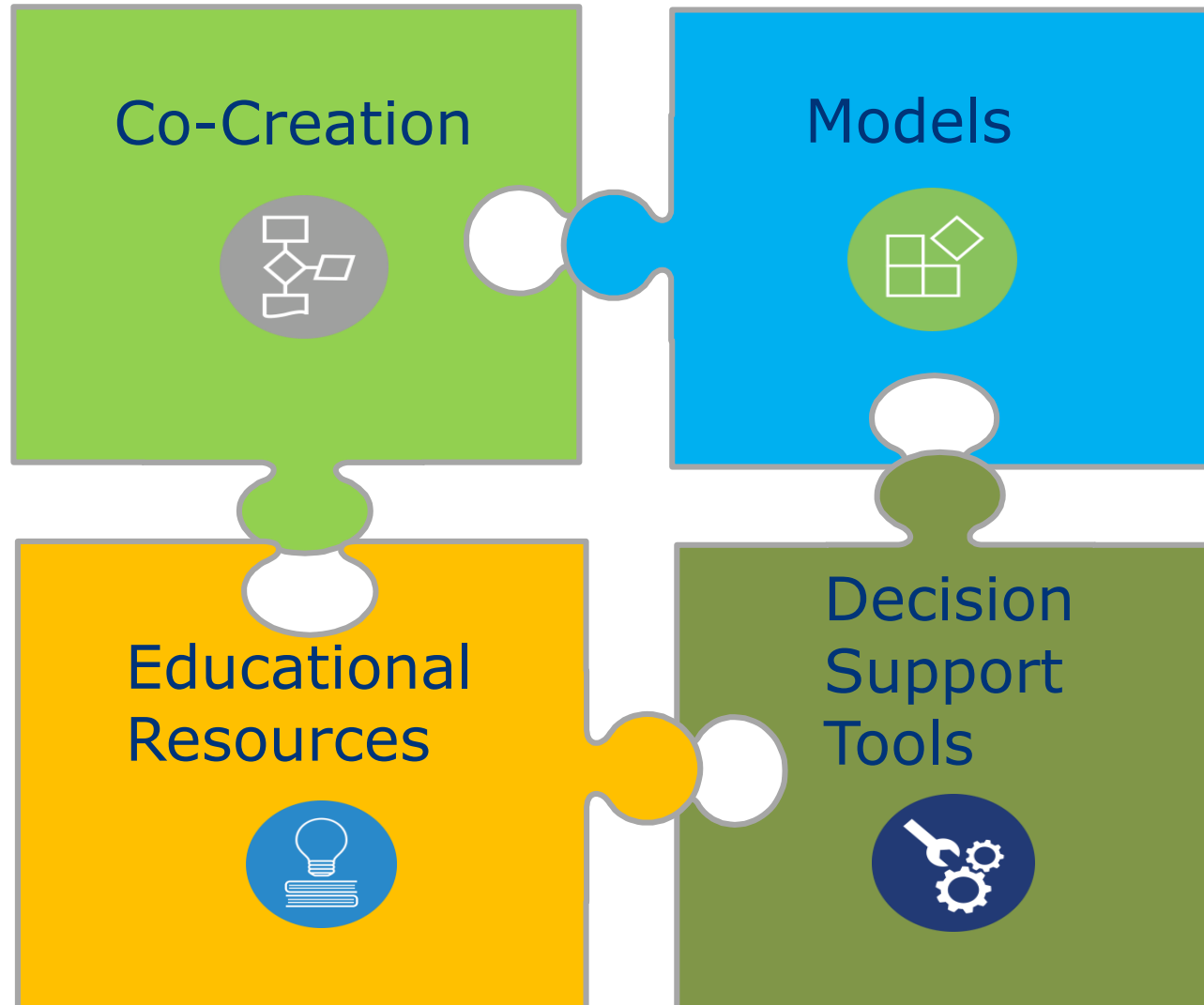
Co-Creating Ecosystem-Based Fisheries Management Solutions



This project has received funding from the European Union's Seventh Framework Programme for research, technological development and demonstration under grant agreement no. 613571



Decision Support Framework



Take what
you need

Use it!

MAIN OUTCOMES

New tools and technologies

indicators, MareFrame database incl. upload & extraction routines, evaluation tools

Extended ecosystem models and assessment methods

tests and comparisons of models across ecosystems

New Decision Support Framework (DSF) that can highlight alternative management actions and their consequences

Development, acceptance and incorporation by stakeholders

co-creation, training tools, visualization tools for different management scenarios

Support implementation of the Common Fisheries Policy (CFP), Marine strategy Framework Directive (MSFD), Habitats Directive (HD) and SA strategy on “Operation Phakisa Oceans Economy”

clear policy objectives, effective decision-making, industry that is ecologically, socially and economically sustainable.



ALL TOGETHER towards sustainable management, better use and economic sustainability of marine resources.....BLUE BIOECONOMY – BLUE GROWTH



SAF | 21

MareFrame



The Sustainable Development Goals (SDGs) by 2030 (United Nations) and the Paris Agreement on Climate



Thank you

